

# MOODY COUNTY

## SOUTH DAKOTA

### CODE - MAP

BROOKINGS

CO.

CO.	T-108-N	<b>FREMONT</b> <small>CODE-8</small>	<b>RIVERVIEW</b> <small>CODE-13</small>	<b>SPRING CREEK</b> <small>CODE-14</small>	<b>WARD</b> <small>CODE-16</small>	MINNESOTA
T-107-N	<b>JEFFERSON</b> <small>CODE-10</small>	<b>CLARE</b> <small>CODE-3</small>	<b>FLANDREAU</b> <small>CODE-7</small>	<b>UNION</b> <small>CODE-15</small>	OF	
T-106-N	<b>COLMAN</b> <small>CODE-4</small>	<b>EGAN</b> <small>CODE-5</small>	<b>GROVENA</b> <small>CODE-9</small>	<b>LONE ROCK</b> <small>CODE-11</small>	OF	
T-105-N	<b>LYNN</b> <small>CODE-12</small>	<b>ENTERPRISE</b> <small>CODE-6</small>	<b>BLINSMON</b> <small>CODE-2</small>	<b>ALLIANCE</b> <small>CODE-1</small>	STATE	

R-50-W

R-49-W

R-48-W

R-47-W

MINNEHAHA

CO.

LAKE

MINNESOTA OF STATE

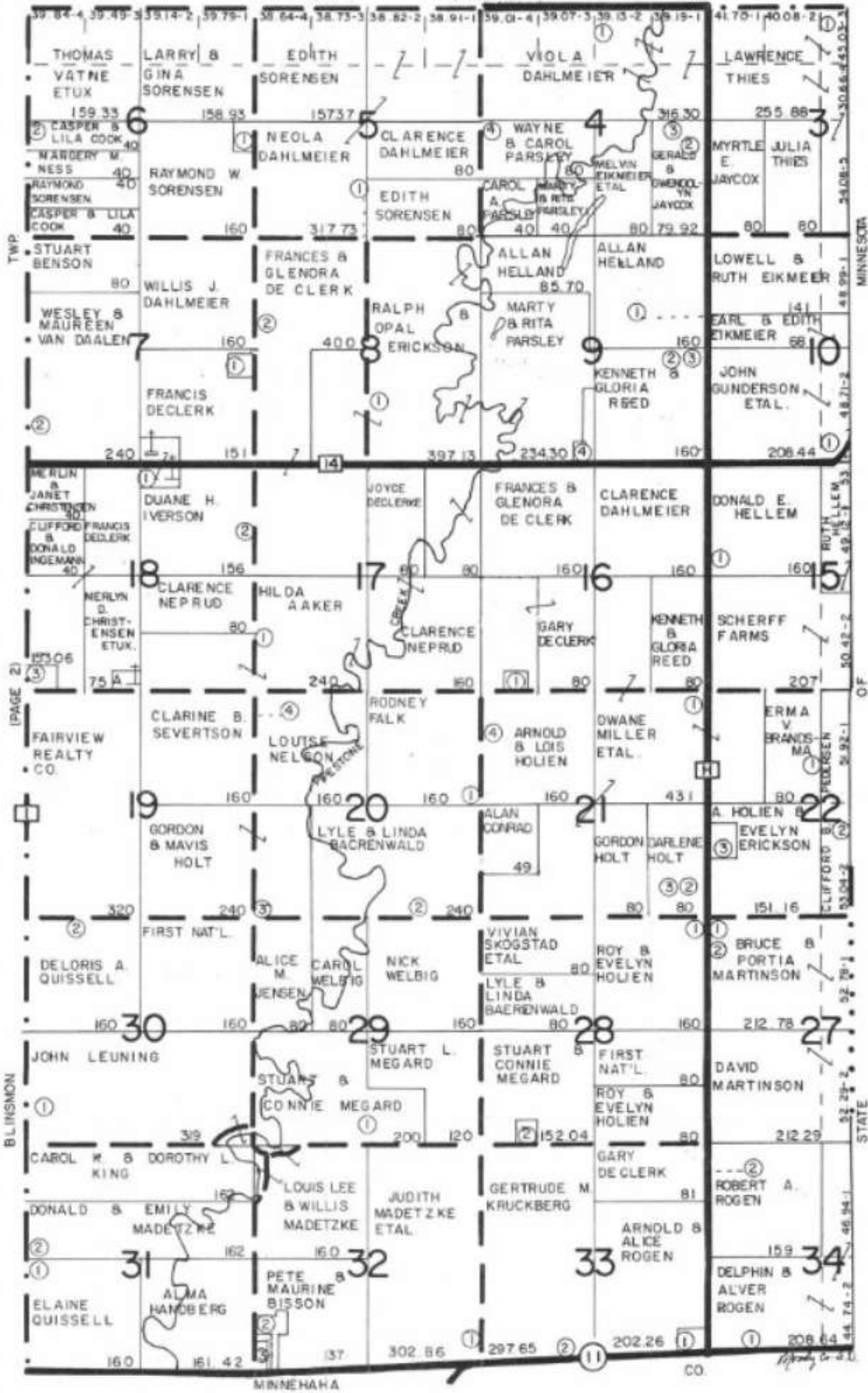
# ALLIANCE CODE - 1

NORTH

LONE ROCK

(PAGE 11)

TWP



MINNESOTA

OF

STATE

MINNEHAHA

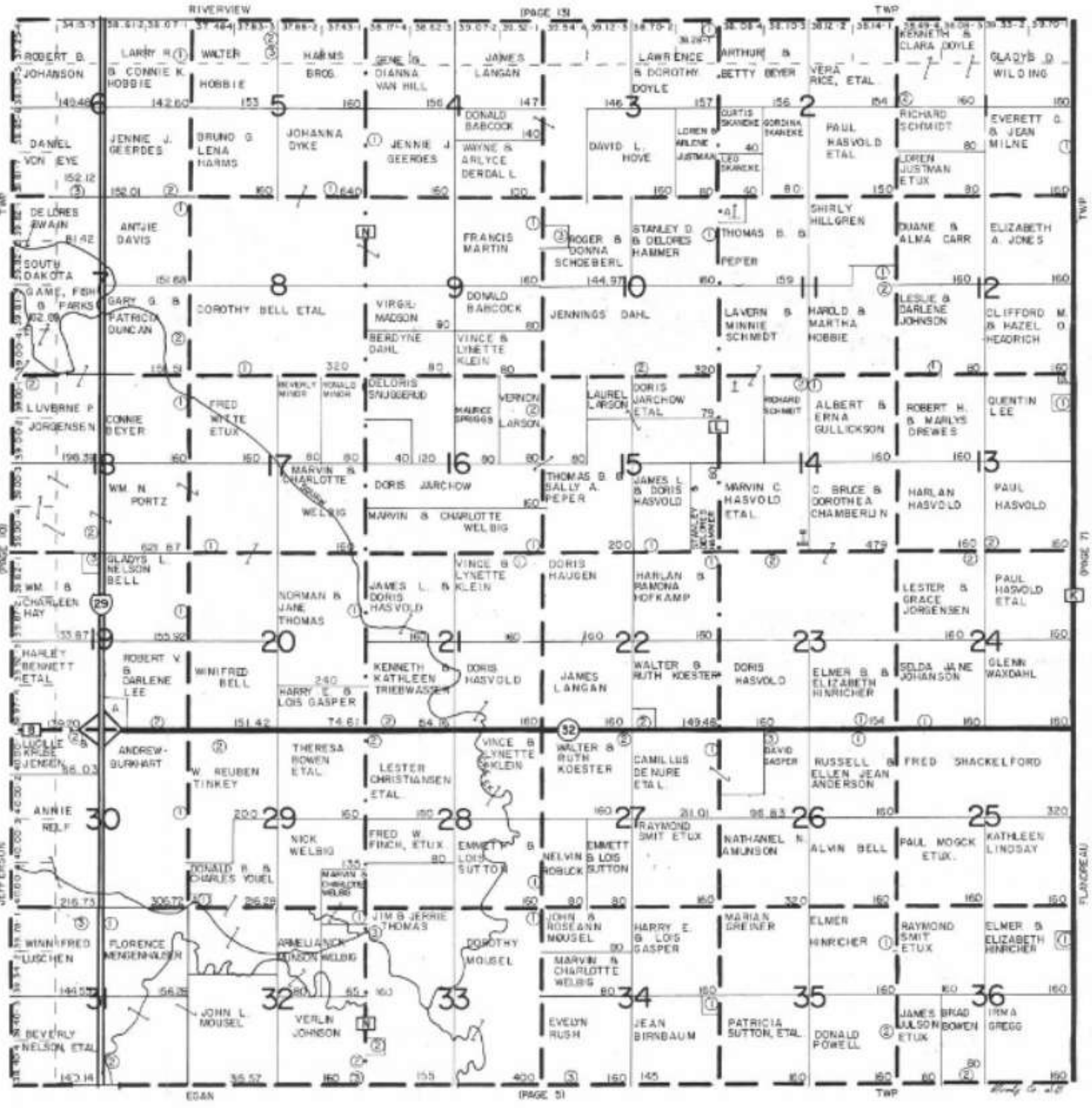
CO.



CLARE  
CODE - 3

TOWNSHIP 107 NORTH

RANGE 49 WEST







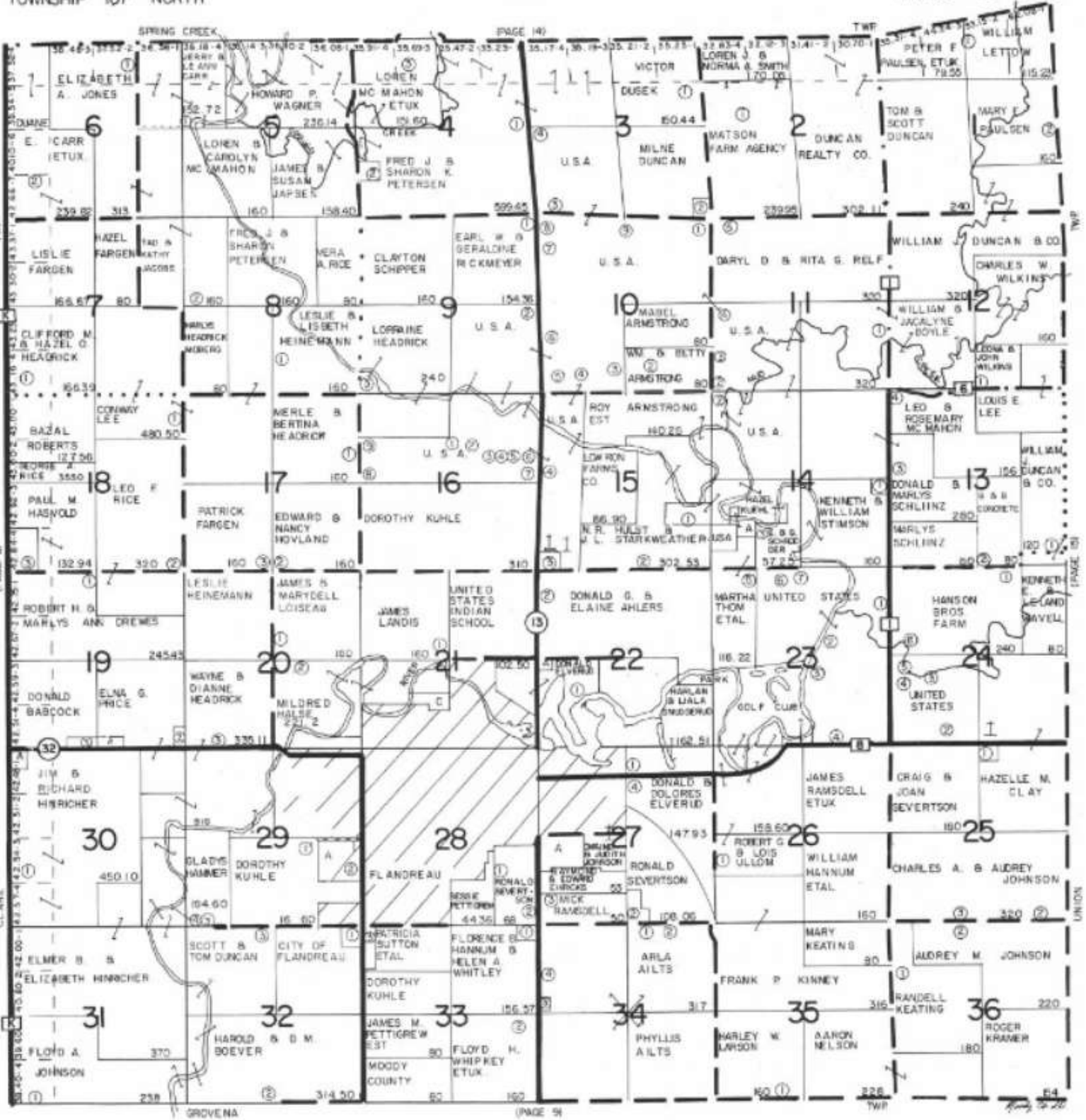


# FLANDREAU

CODE - 7

TOWNSHIP 107 NORTH

RANGE 48 WEST



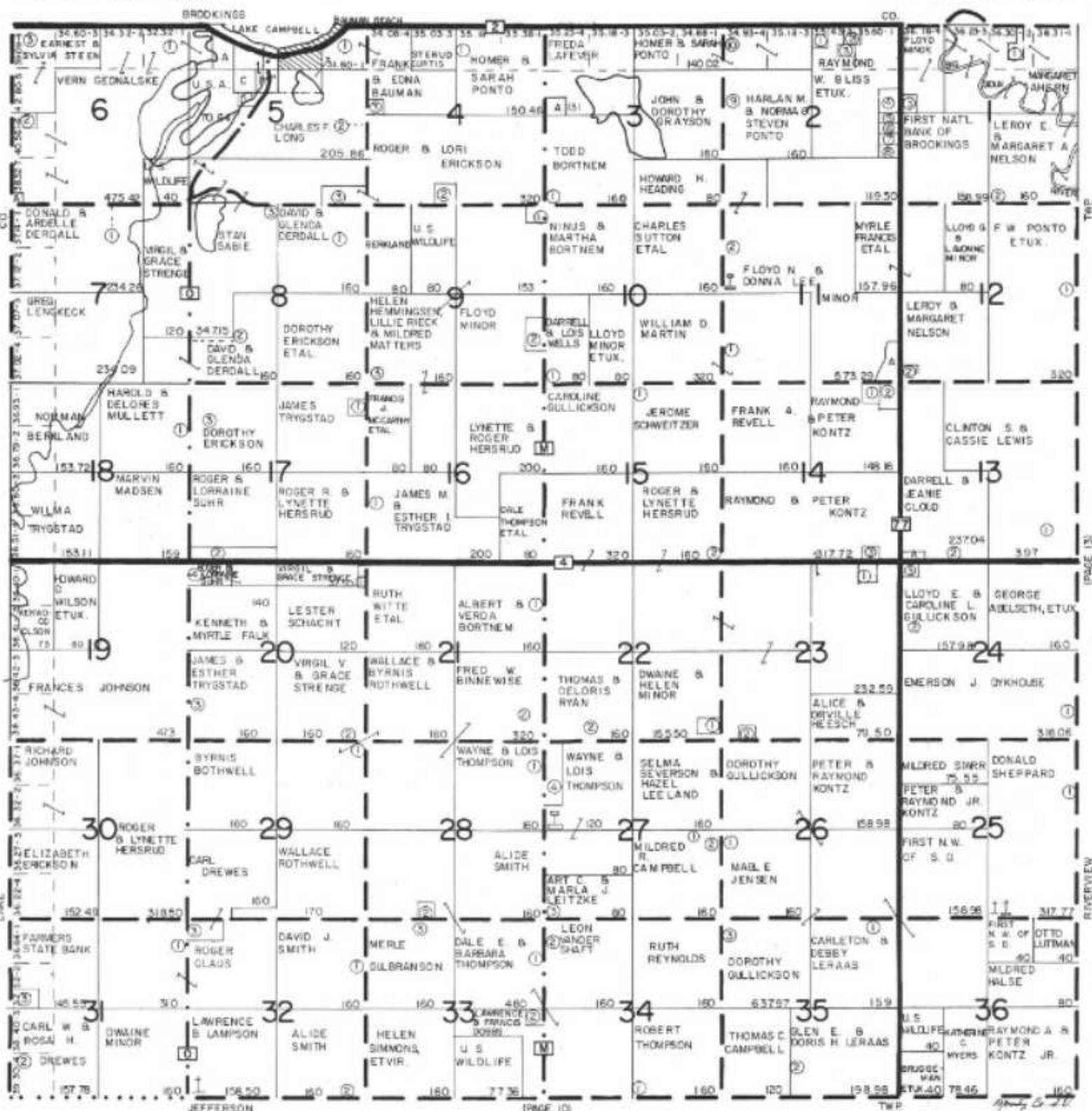


# FREMONT

CODE - 8

TOWNSHIP 108 NORTH

RANGE 50 WEST



JEFFERSON

PRAGE 10

TWP

4-15-21

# GROVENA

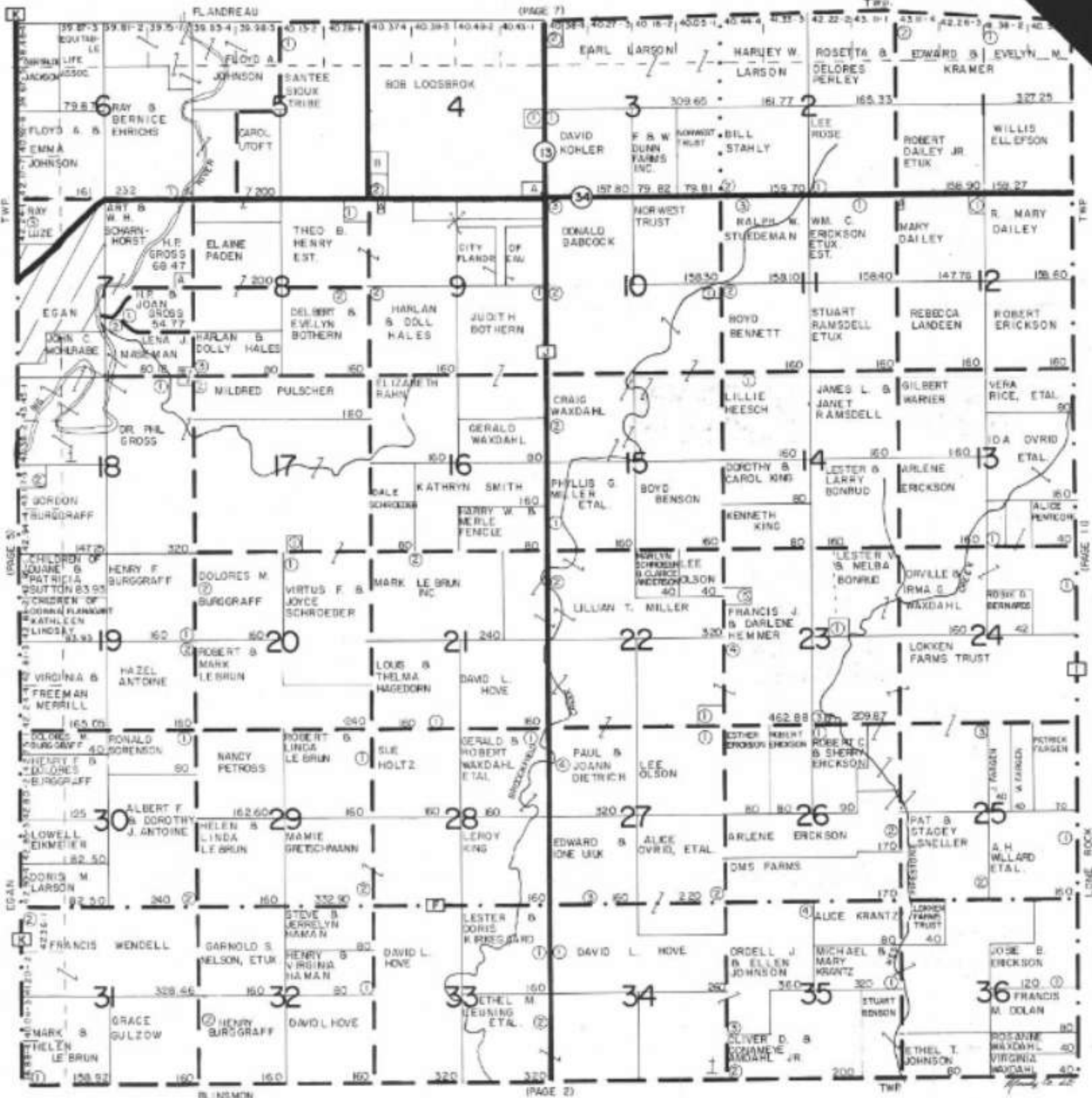
CODE -9

RANGE 48

TOWNSHIP 106 NORTH

(PAGE 7)

Twp.



(PAGE 2)

Twp.

# JEFFERSON

CODE -10

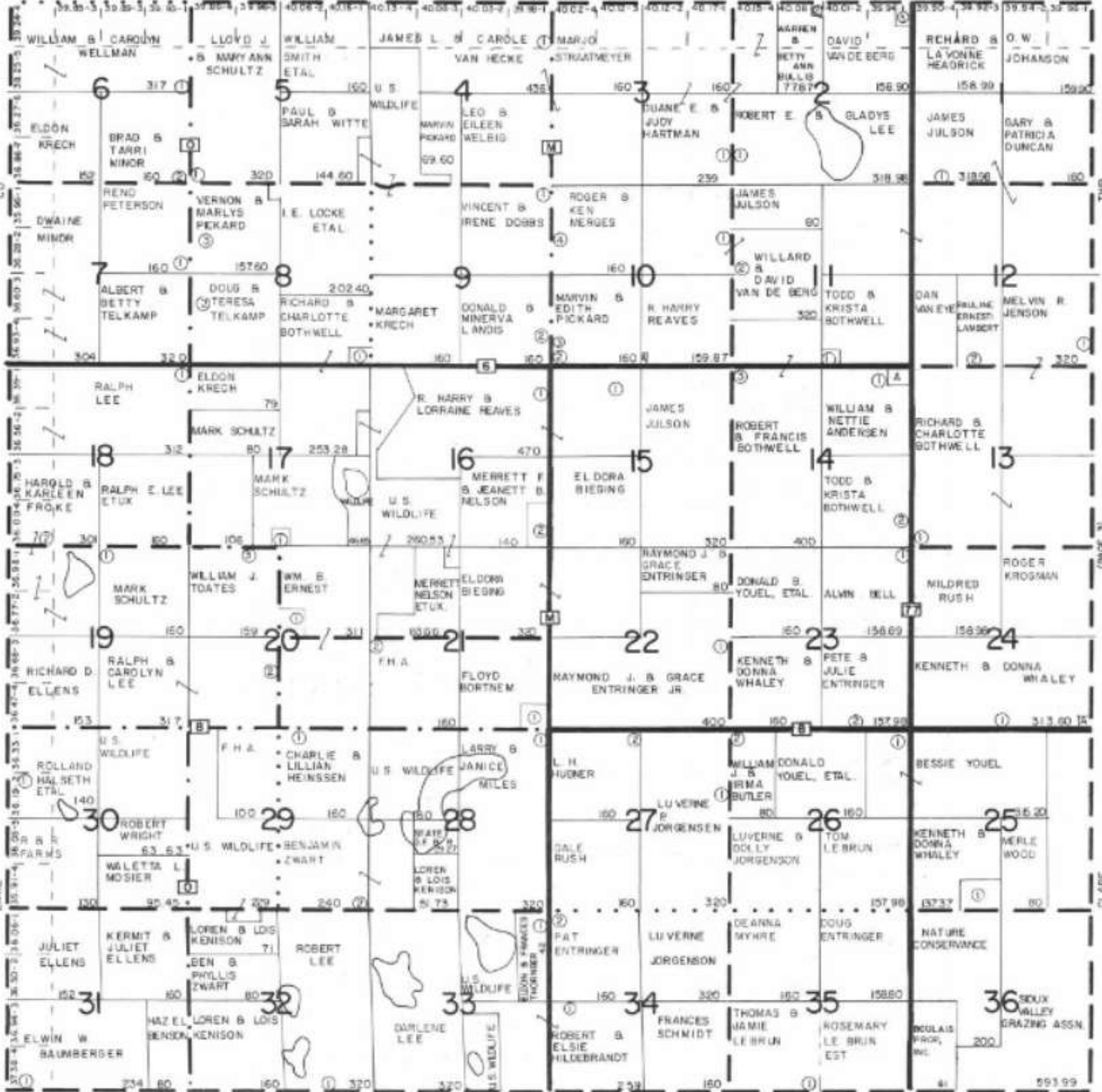
TOWNSHIP 107 NORTH

RANGE 50 WEST

FREMONT

(PAGE 3)

TWP



COLMAN

(PAGE 4)

TWP

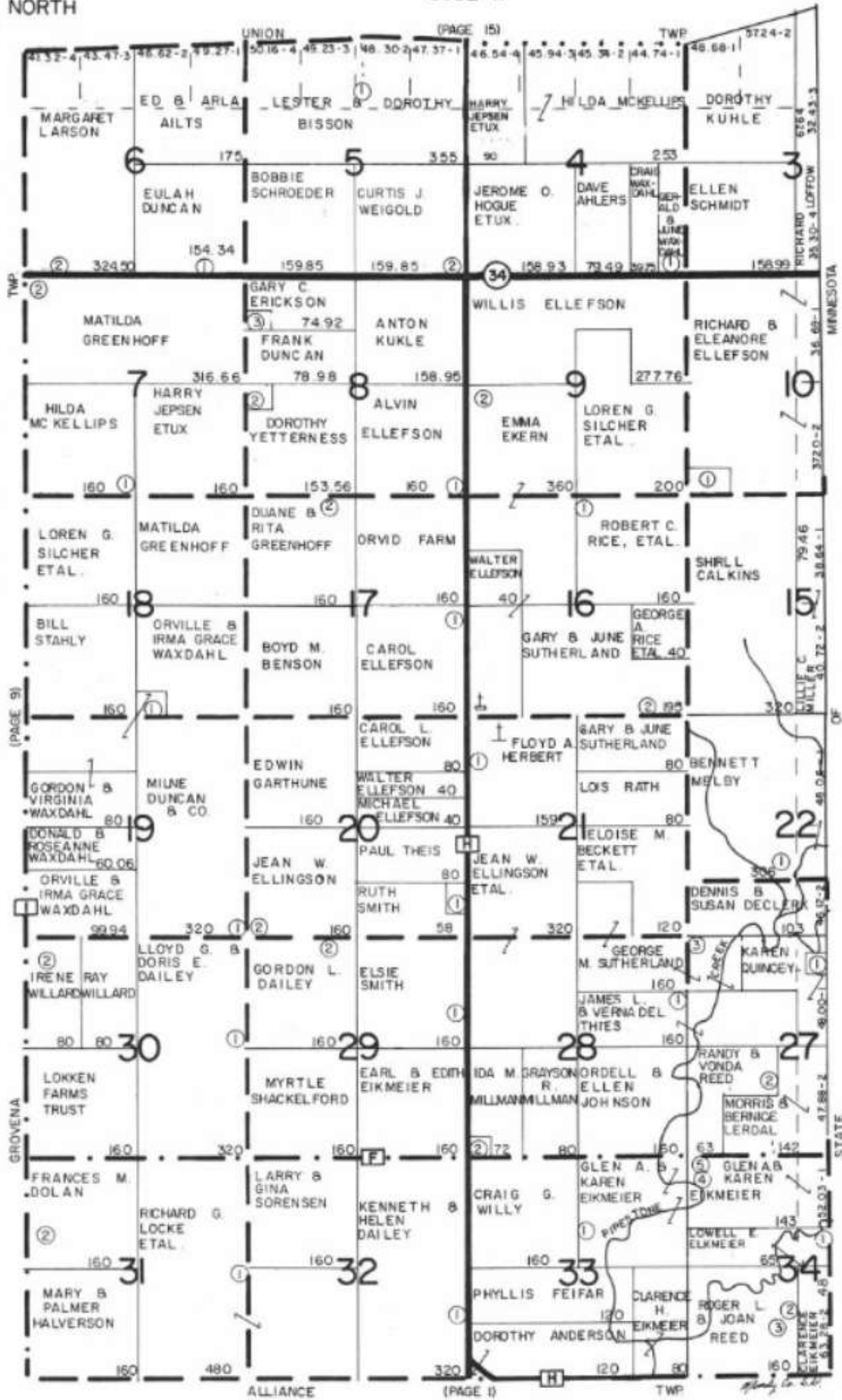
Map by G. L. D.

# LONE ROCK

CODE -11

NORTH

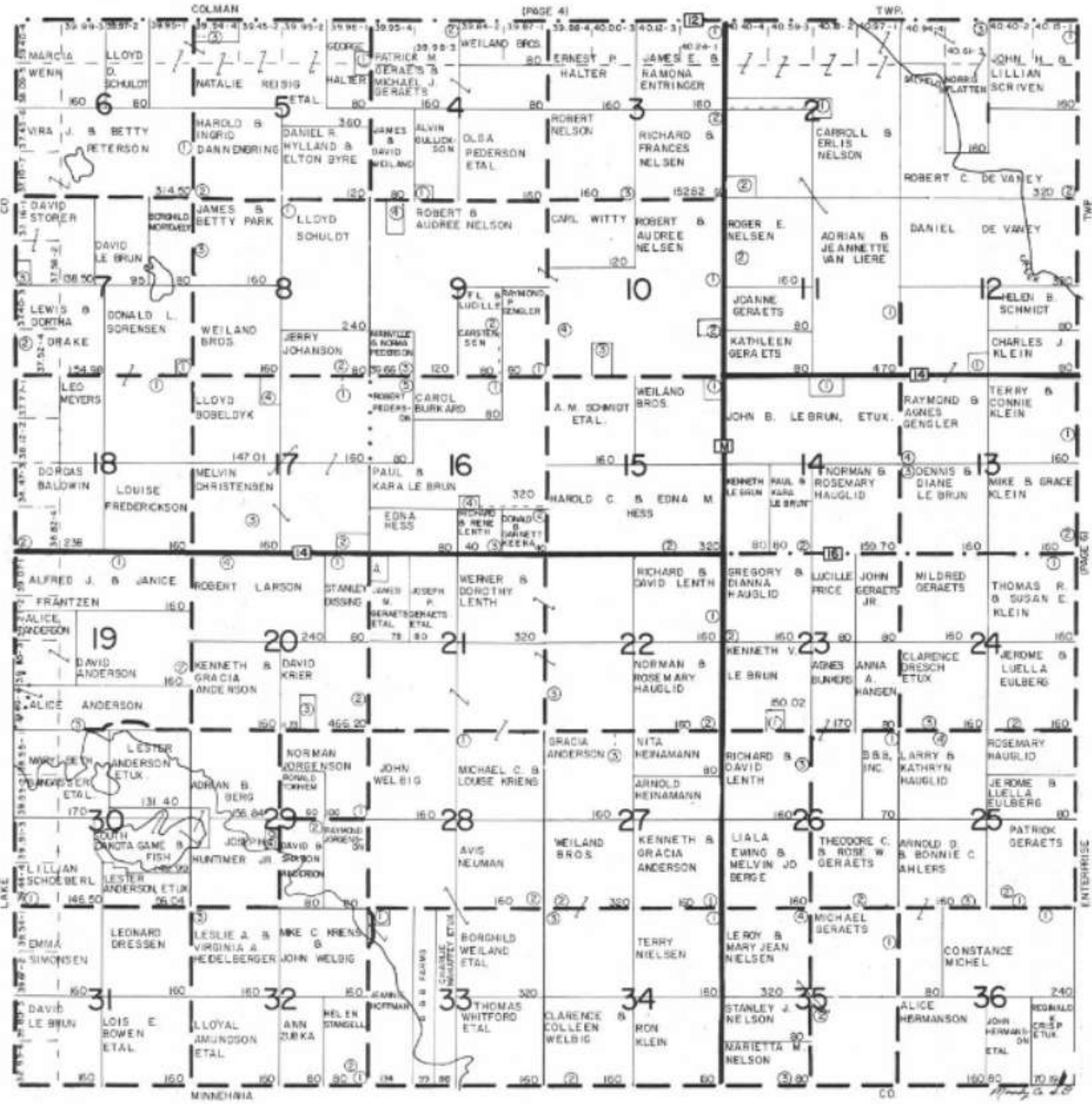
RA



LYNN  
CODE - 12

TOWNSHIP 105 NORTH

RANGE 50 WEST



# RIVERVIEW

CODE - 13

TOWNSHIP 108 NORTH

RANGE 49 WEST



CLARE

PRGE 31

TWP

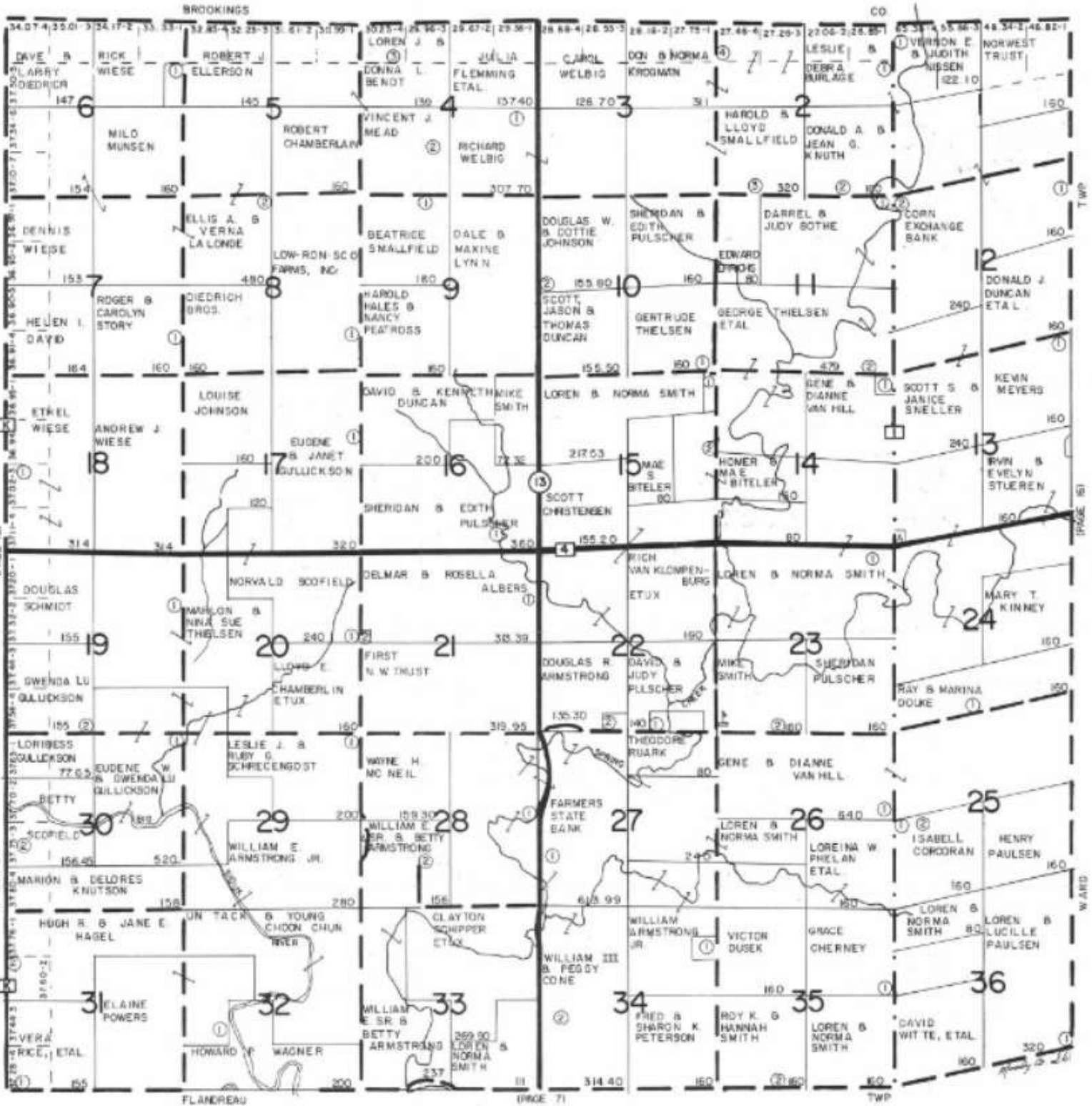
APR 2 1961

# SPRING CREEK

CODE -14

TOWNSHIP 108 NORTH

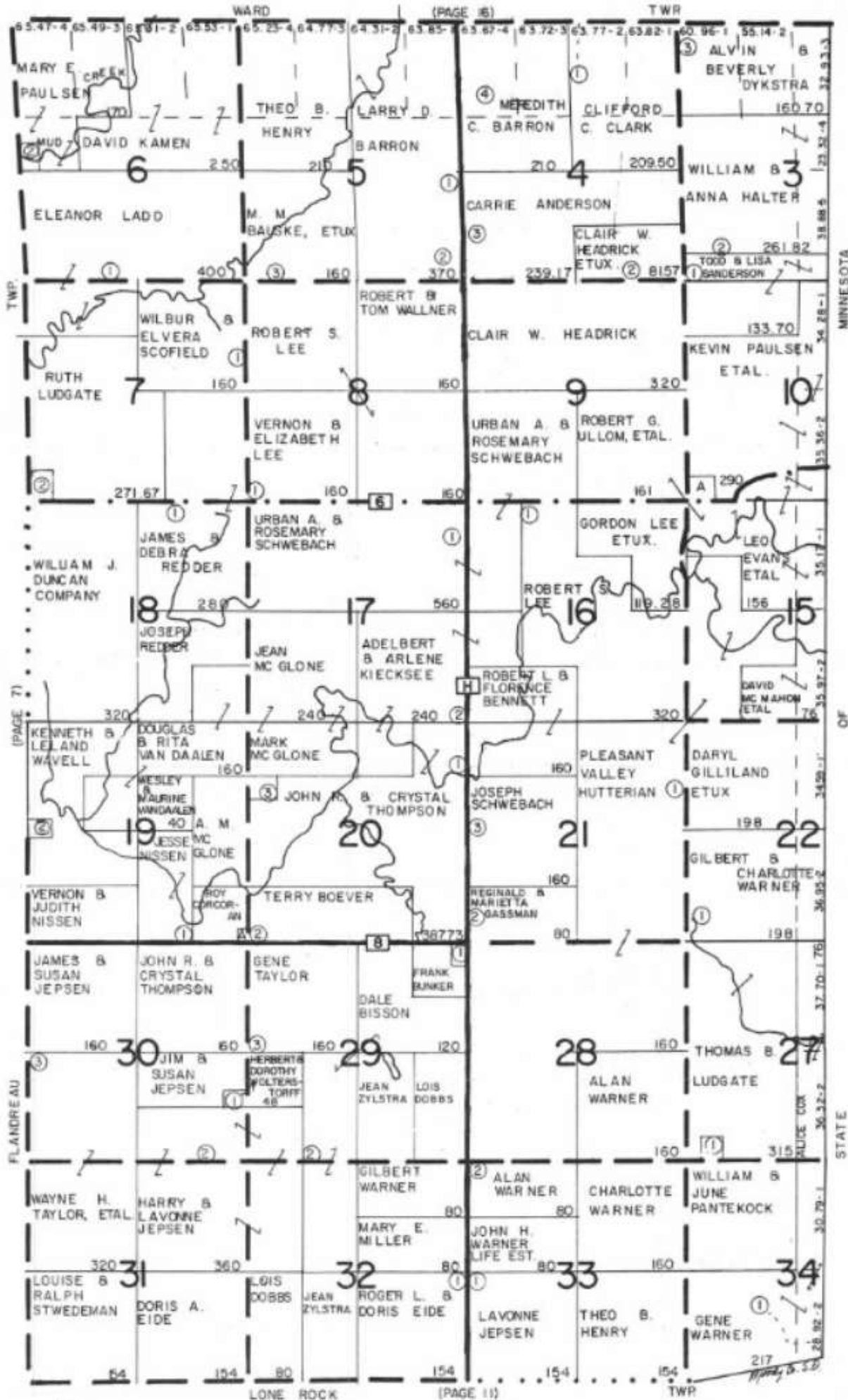
RANGE 48 WEST



# UNION

CODE - 15

NORTH





WARD  
CODE - 16

NORTH

R

BROOKINGS

CO.

